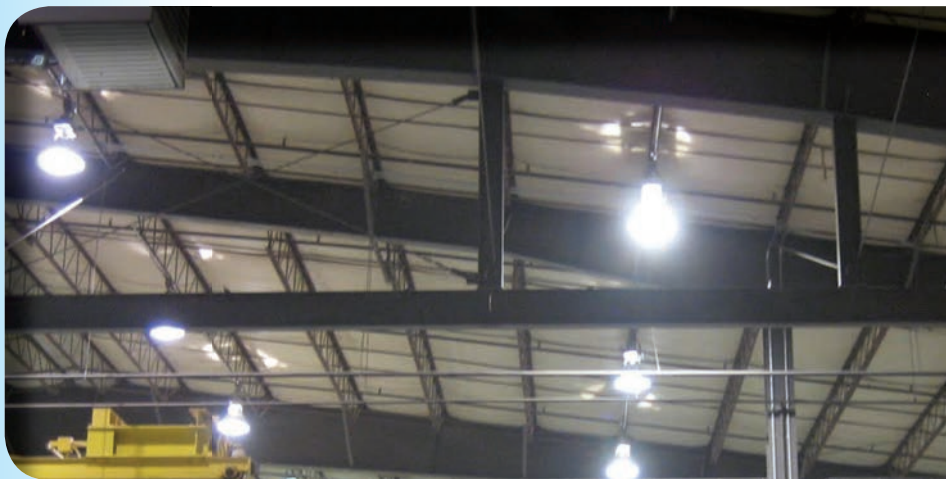




LED HIGH BAY LIGHTING FIXTURE



JED HBSL-150



Applications:

Suitable for Warehouses, Production and Logistics Workshop, Retail Stores, Indoor Stadiums, and other industrial and commercial lighting purposes

Features:

- Energy efficient LED High Bay Light
- LED from CREE with Universal Voltage (90-305V) Driver
- Unique patented thermal management design to ensure low LED junction temperature
- Extremely light weight to enhance the safety use and installation
- Easy maintenance, dust prevention, longer lifetime with high lumen maintenance

Powered by:
CREE
LED Light



LED HIGH BAY LIGHTING FIXTURE

Technical Specification:

Model	JED HBSL-100	JED HBSL-150
Lumen	7360 lm	11040 lm
LED Chip	CREE-XPE-R2	CREE-XPE-R2
Light Source	LED 100W	LED 150W
Dimensions	540mm Diameter x 370mm Height	540mm Diameter x 370mm Height
Net Weight	5.25Kgs	5.25Kgs
Color Temperature(K)	5,500K (Daylight)	5,500K (Daylight)
Input Voltage	90-305 VAC	90-305 VAC
Power Factor	>0.9	>0.9
Burning Hours	50,000Hrs	50,000Hrs
Material	Die-cast Aluminum	Die-cast Aluminum
Warranty	2 years	2 years
Standards	CE / RoHS	CE / RoHS

Dimensions



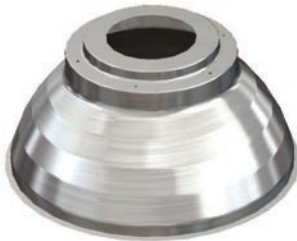
JED HBSL-150



Polycarbonate Reflector w/ CREE LED chip

Installation Guide

1. Get the two parts of the lighting fixture from the package



Part A



Part B

2. Detach the PC cover from Part B
3. Put Part A and the PC cover on Part B successively, connect this using a screw and make sure that it was tightened.



4. From the finished installed item, connect the supply load from outlet box to fixture leads: Red to red; blue to blue; and ground to ground. Carefully push all wires in the back of the outlet box



Products Distributed by:



INNOVALITE
ELECTRICAL ENTERPRISE

2F Unit F Princeton Square Bldg.,
#35 C. Raymundo Avenue, Rosario, Pasig City, Philippines
Phone Nos.: (02)642-4739 / (02)915-2145; Fax: (02)628-0605 / (02)900-0228
Website: www.innovalitephilippines.com; E-mail: innovalite@yahoo.com